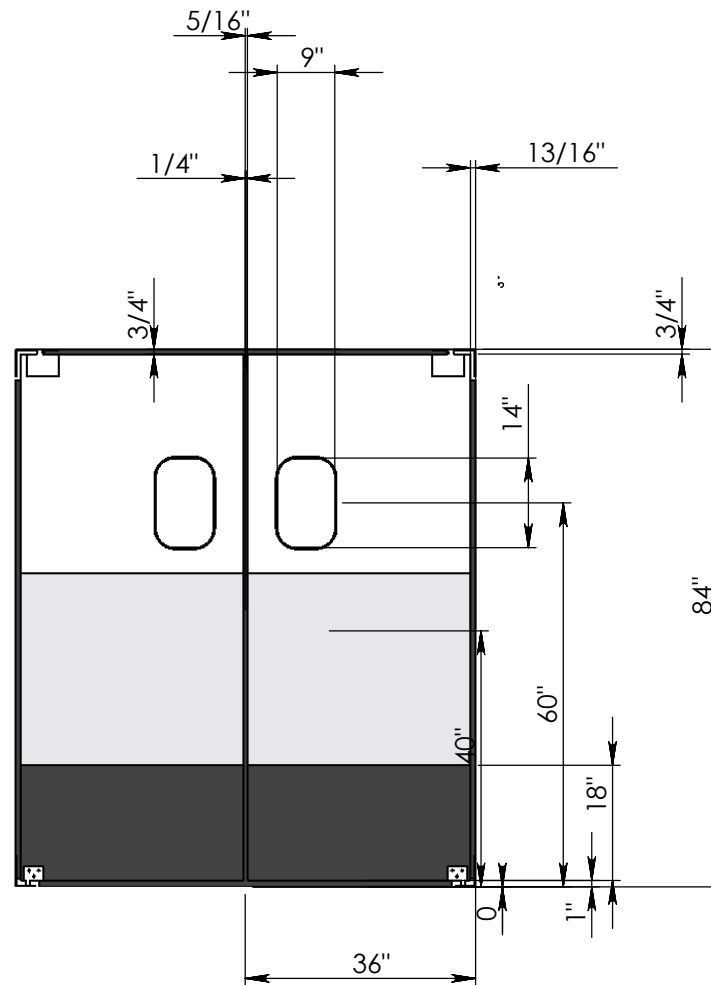


**SPECIFICATION**

Door Body: 1.5" foam insulated core. Finish: 20 gauge full length stainless steel panels (both sides)

**FCG - 5  
RHS**



QUANTITY: 1
FINISHED OPENING SIZE: 72" W X 84" H REGULAR
DOOR COLOR: ALUMINUM
WINDOW: 9" X 14" SINGLE PANE BLACK RUBBER MOLDING CLEAR ACRYLIC
HINGE: EZ SWING
JAMB GUARD: NONE MATERIAL: GASKETS: YES
KICKPLATE 18 GALV BASE PLATE

Approved By:

Signature:

TAG:



Ph: 800-828-3655  
 Fx: 800-828-3577  
[www.eliasoncorp.com](http://www.eliasoncorp.com)

**PROPRIETARY AND CONFIDENTIAL**  
 THE INFORMATION CONTAINED IN THIS DRAWING IS THE SOLE PROPERTY OF ELIASON CORP. ANY REPRODUCTION IN PART OR AS A WHOLE WITHOUT THE WRITTEN PERMISSION OF ELIASON CORP. IS PROHIBITED.

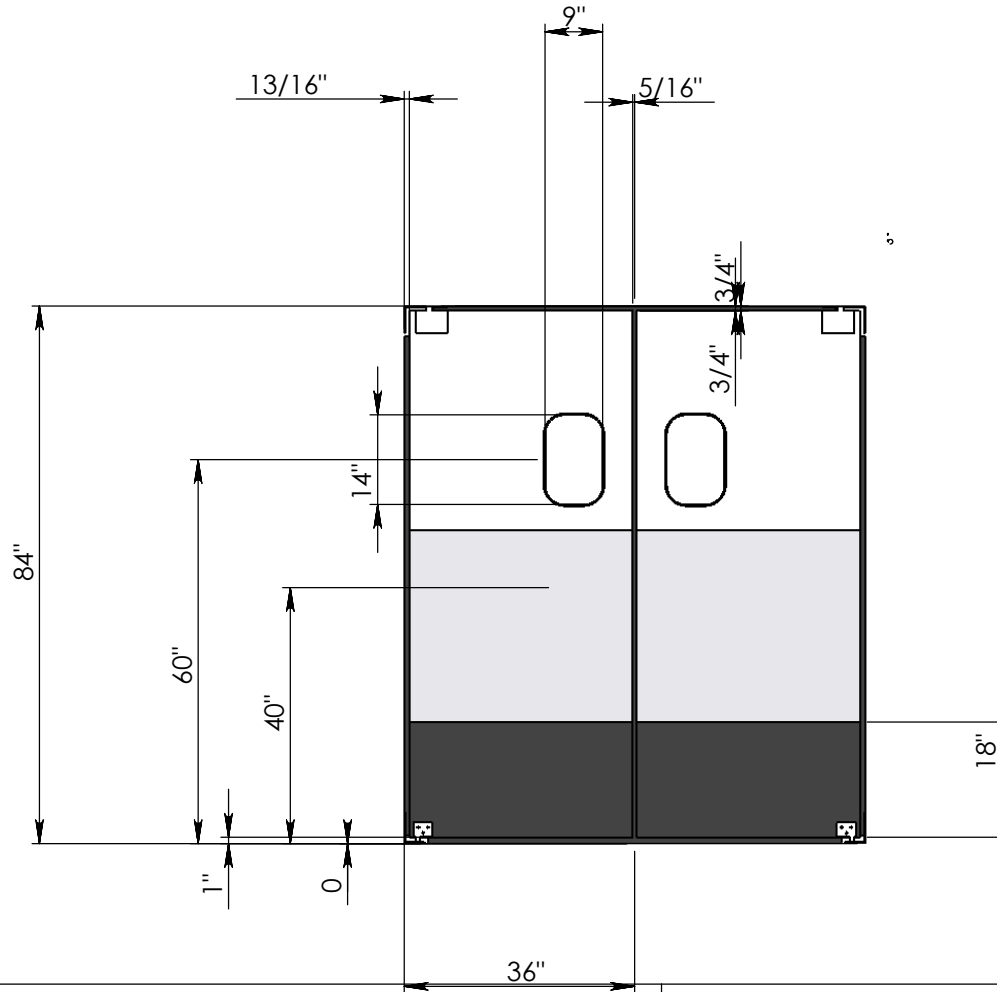
SOLD TO:  
 PROJECT:  
 ORDER #:

PO #:

**SPECIFICATION**

Door Body: 1.5" foam insulated core. Finish: 20 gauge full length stainless steel panels (both sides)

# FCG - 5 LHS



QUANTITY: 1
FINISHED OPENING SIZE: 72" W X 84" H REGULAR
DOOR COLOR: ALUMINUM
WINDOW: 9" X 14" SINGLE PANE BLACK RUBBER MOLDING CLEAR ACRYLIC
HINGE: EZ SWING
JAMB GUARD: NONE MATERIAL: GASKETS: YES
KICKPLATE 18 GALV BASE PLATE

Approved By:

Signature:

TAG:



Ph: 800-828-3655  
Fx: 800-828-3577  
www.eliasoncorp.com

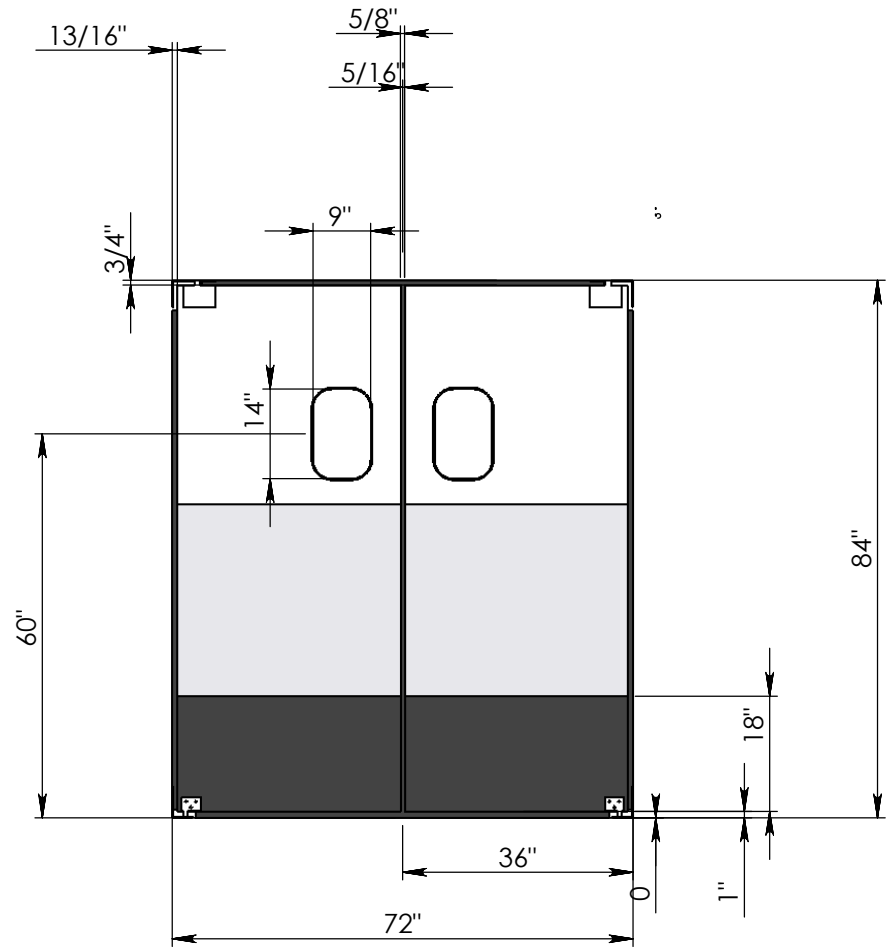
**PROPRIETARY AND CONFIDENTIAL**  
THE INFORMATION CONTAINED IN THIS DRAWING IS THE SOLE PROPERTY OF ELIASON CORP. ANY REPRODUCTION IN PART OR AS A WHOLE WITHOUT THE WRITTEN PERMISSION OF ELIASON CORP. IS PROHIBITED.

SOLD TO:	
PROJECT:	
ORDER #:	
PO #:	

**SPECIFICATION**

Door Body: 1.5" foam insulated core. Finish: 20 gauge full length stainless steel panels (both sides)

# FCG - 5 D



QUANTITY: 1
FINISHED OPENING SIZE: 72" W X 84" H REGULAR
DOOR COLOR: ALUMINUM
WINDOW: 9" X 14" SINGLE PANE BLACK RUBBER MOLDING CLEAR ACRYLIC
HINGE: EZ SWING
JAMB GUARD: NONE MATERIAL: GASKETS: YES
KICKPLATE 18 GALV BASE PLATE

SCALE:1:30

Approved By:

Signature:

TAG:



Ph: 800-828-3655  
 Fx: 800-828-3577  
[www.eliasoncorp.com](http://www.eliasoncorp.com)

**PROPRIETARY AND CONFIDENTIAL**  
 THE INFORMATION CONTAINED IN THIS DRAWING IS THE SOLE PROPERTY OF ELIASON CORP. ANY REPRODUCTION IN PART OR AS A WHOLE WITHOUT THE WRITTEN PERMISSION OF ELIASON CORP. IS PROHIBITED.

SOLD TO:  
 PROJECT:  
 ORDER #:

PO #: