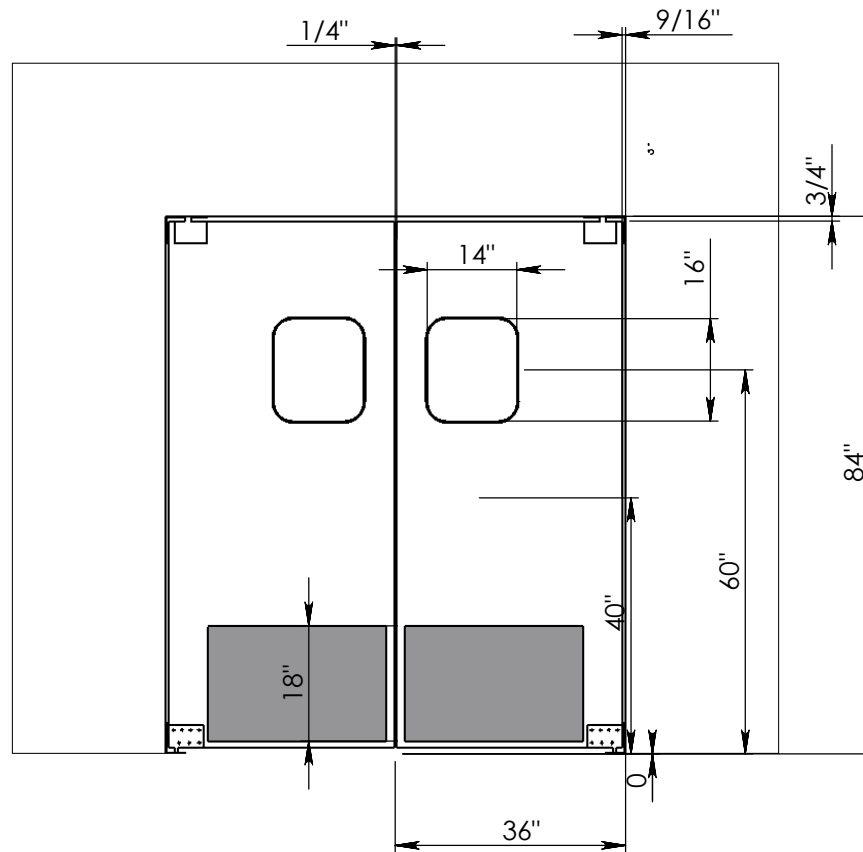


**SPECIFICATION**

Door Body: Urethane foam core with a high strength structural PVC frame, 1.5" total door thickness. Finish: 0.100" thick high impact thermoplastic exterior

# HCP - 10 RHS



QUANTITY: 1
FINISHED OPENING SIZE: 72" W X 84" H REGULAR
DOOR COLOR: PLEASE ADVISE
WINDOW: 14" X 16" DOUBLE PANE BLACK RUBBER MOLDING CLEAR ACRYLIC
HINGE: EZ SWING
JAMB GUARD: NONE MATERIAL: GASKETS: NO
BUMPER 18 HIGH ROTOMOLDED BLACK

Approved By:

Signature:

TAG:



Ph: 800-828-3655  
 Fx: 800-828-3577  
[www.eliasoncorp.com](http://www.eliasoncorp.com)

**PROPRIETARY AND CONFIDENTIAL**  
 THE INFORMATION CONTAINED IN THIS DRAWING IS THE SOLE PROPERTY OF ELIASON CORP. ANY REPRODUCTION IN PART OR AS A WHOLE WITHOUT THE WRITTEN PERMISSION OF ELIASON CORP. IS PROHIBITED.

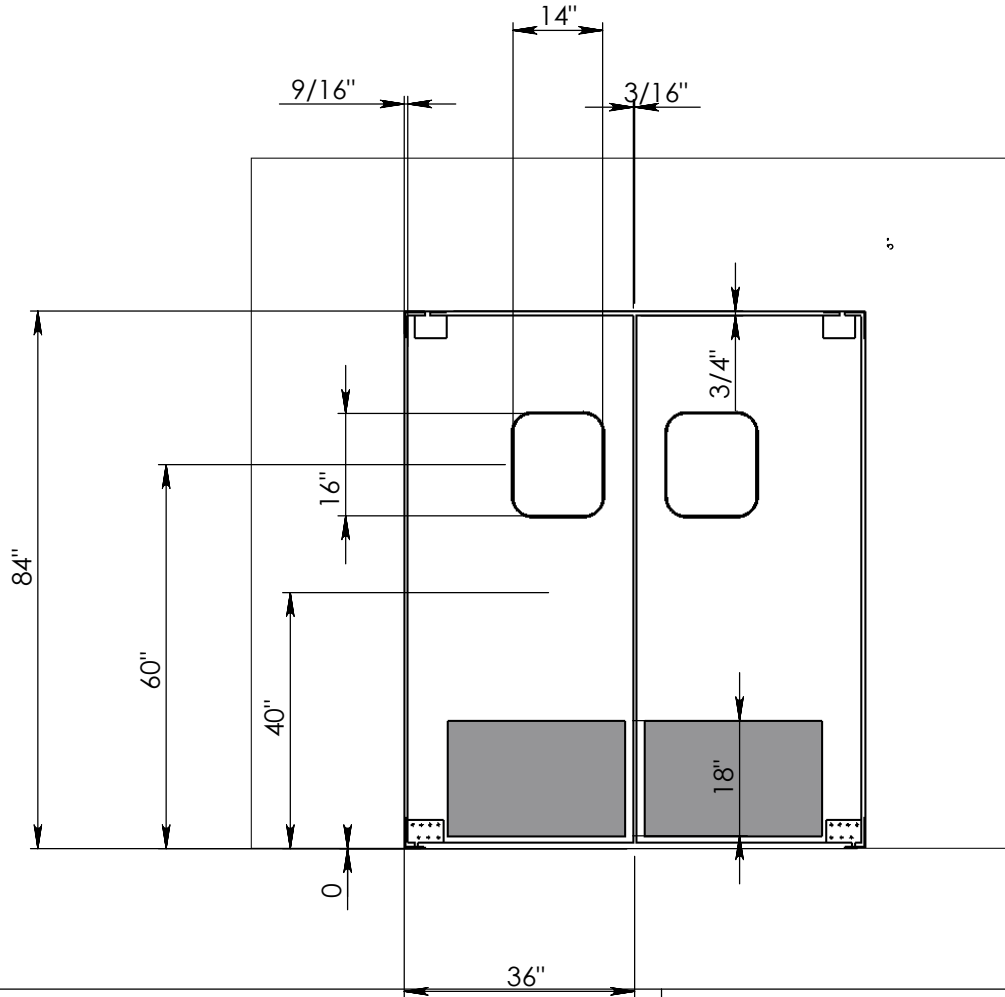
SOLD TO:  
 PROJECT:  
 ORDER #:

PO #:

**SPECIFICATION**

Door Body: Urethane foam core with a high strength structural PVC frame, 1.5" total door thickness. Finish: 0.100" thick high impact thermoplastic exterior

# HCP - 10 LHS



QUANTITY: 1
FINISHED OPENING SIZE: 72" W X 84" H REGULAR
DOOR COLOR: PLEASE ADVISE
WINDOW: 14" X 16" DOUBLE PANE BLACK RUBBER MOLDING CLEAR ACRYLIC
HINGE: EZ SWING
JAMB GUARD: NONE MATERIAL: GASKETS: NO
BUMPER 18 HIGH ROTOMOLDED BLACK

Approved By: \_\_\_\_\_

Signature: \_\_\_\_\_

TAG: \_\_\_\_\_



Ph: 800-828-3655  
 Fx: 800-828-3577  
[www.eliasoncorp.com](http://www.eliasoncorp.com)

**PROPRIETARY AND CONFIDENTIAL**  
 THE INFORMATION CONTAINED IN THIS DRAWING IS THE SOLE PROPERTY OF ELIASON CORP. ANY REPRODUCTION IN PART OR AS A WHOLE WITHOUT THE WRITTEN PERMISSION OF ELIASON CORP. IS PROHIBITED.

SOLD TO:

PROJECT:

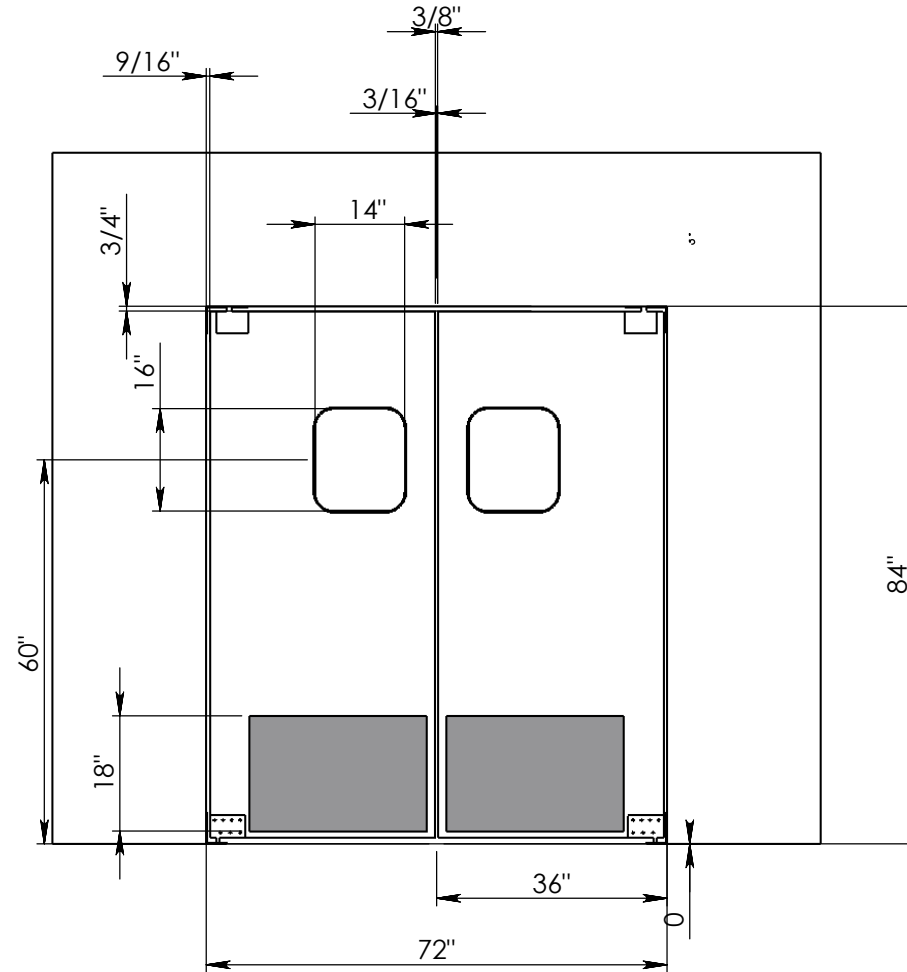
ORDER #:

PO #:

**SPECIFICATION**

Door Body: Urethane foam core with a high strength structural PVC frame, 1.5" total door thickness. Finish: 0.100" thick high impact thermoplastic exterior

# HCP - 10 D



QUANTITY: 1
FINISHED OPENING SIZE: 72" W X 84" H REGULAR
DOOR COLOR: PLEASE ADVISE
WINDOW: 14" X 16" DOUBLE PANE BLACK RUBBER MOLDING CLEAR ACRYLIC
HINGE: EZ SWING
JAMB GUARD: NONE MATERIAL: GASKETS: NO
BUMPER 18 HIGH ROTOMOLDED BLACK

SCALE:1:30

Approved By: \_\_\_\_\_

Signature: \_\_\_\_\_

TAG: \_\_\_\_\_



**Ph: 800-828-3655**  
**Fx: 800-828-3577**  
[www.eliasoncorp.com](http://www.eliasoncorp.com)

**PROPRIETARY AND CONFIDENTIAL**  
THE INFORMATION CONTAINED IN THIS DRAWING IS THE SOLE PROPERTY OF ELIASON CORP. ANY REPRODUCTION IN PART OR AS A WHOLE WITHOUT THE WRITTEN PERMISSION OF ELIASON CORP. IS PROHIBITED.

**SOLD TO:** \_\_\_\_\_  
**PROJECT:** \_\_\_\_\_  
**ORDER #:** \_\_\_\_\_

**PO #:** \_\_\_\_\_